



the **play inspection** company

Annual Inspection

Mid Suffolk District Council

Thurston Playing Field

Heath Road, Thurston, Suffolk, IP31 3PJ



API Associate



Unit 5, Glenmore Business Park, Blackhill Road, Poole, Dorset, BH16 6NL
t- 01202 590675 e- info@playinspections.co.uk

[www. playinspections .co.uk](http://www.playinspections.co.uk)



Inspection Scope for RPII Annual Inspectors

This document outlines the RPII scope for inspections undertaken by the Inspectors listed as Indoor and Outdoor Annual Inspectors (where relevant) on the RPII Register of Inspectors when undertaking inspections.

Inspections are undertaken with reference to the standards listed in this preamble only; where no date for the standard is given it will be the standard that is current at the time of inspection except where overlap periods are granted by the standards committee when standards are updated. The information contained in reports is provided to assist the owner/operator in fulfilling their responsibilities as detailed in the relevant standard. Other standards referenced within the listed standards do not form part of the inspection, unless they are also explicitly listed here.

For the avoidance of doubt, references to compliance relate only to those aspects that can be assessed visually or manually, within the limitations of a non-dismantling, non-destructive inspection, and without the use of specialist equipment.

The following standards define the technical framework within which inspections are carried out; not all requirements within these standards can be verified during an inspection. The following standards are relevant to all installations of equipment that are publicly accessible to users; this includes public parks, pay and play parks, schools, nurseries, public houses, holiday parks, indoor play centres, farm parks etc. All equipment used or employed in publicly accessible areas should meet with the requirements of the relevant standards (listed below):

BS EN 1176 Parts 1, 2, 3, 4, 5, 6, 10 & 11 Playground equipment intended for permanent installation outdoors & indoors.

BS EN 1176 Part 7 - 'Guidance on Installation, Inspection, Maintenance and Operation' (this document gives guidance to the owners/operators of the facility on the installation, inspection, maintenance and operation of playground equipment, excluding ancillary items).

In the United Kingdom the National Foreword forms an important part to the understanding and implementation of the recommendations set out in this document. It clarifies the application of the document within the UK as best practice guidance, as the document has been used since its initial publication. Therefore, in the UK this standard (BS EN 1176 – Part 7) contains no requirements and needs to be read and implemented as guidance, with the use of the term 'shall' therefore becoming a recommendation, as in the term 'should'.

Domestic play equipment falls outside of the scope of BS EN 1176 and has its own standards (BS EN 71 series – Safety of Toys). Where domestic equipment can be identified this will be acknowledged in the report; any comments will be made using the principles of BS EN 1176 as guidance only, rather than as a formal assessment of compliance.

When water play items, including spray parks, are inspected any comments concerning compliance within the inspection will refer to EN 1176. We have not assessed these against the requirements of EN 17232 (Water play equipment and features).

Other equipment that is not clearly identified as unsupervised or domestic (natural play, self-build equipment etc.) will be assessed for compliance with the relevant standard listed below:

- BS EN 15312** Free access multi-sports equipment
- BS EN 14974** Skateparks
- BS EN 16630** Permanently installed outdoor fitness equipment
- BS EN 16899** Parkour equipment (plus RPII/API guidance notes)

Annual and Post Installation inspections will take into consideration compliance with these current standards, and defects related to wear and vandalism. Items not listed in the report have not been included in the inspection. The inspection will cover the playground equipment and the active area (that area which is obviously part of the playground), nominally up to three metres around, the fence line if closer, or other areas as agreed.

Operational inspections only take into consideration defects related to cleanliness, equipment ground clearances, ground surface finishes, exposed foundations, sharp edges, missing parts, excessive wear (of moving parts) structural integrity, wear and vandalism. Routine visual inspections relate only to the most obvious defects such as broken or missing parts, litter, vandalism and issues created by severe weather conditions (the intention is to identify hazards created by storm damage).

All inspections are non-dismantling, non-destructive and do not include any structural, toxicology or impact assessments defined in the standard; however, the inspector will undertake a basic manual stability check appropriate to a visual

inspection and if equipment fails under manual load, or any other hazard is identified as an unacceptable risk, the owner/operator will be notified as soon as practicably possible.

The inspector will access all reasonably accessible equipment and will assess all reasonably accessible parts above the standing surface. For the purposes of this inspection, “reasonably accessible” means accessible without the use of specialist access equipment, tools, or unsafe working practices. Where it is not possible to access parts of the equipment without employing an alternative means of access the report will record the action required by the owner/operator to ensure the continued safe use of the equipment.

Ancillary equipment will be assessed using the inspector’s knowledge and experience of the standards named in this document. (Note: Ancillary items are not included in the specific equipment-type parts of the EN 1176 series; hence they are not assessed for compliance with EN 1176 series and are subject to a general safety assessment).

The owner/operator is responsible for the overall safety of the equipment and area.

The inspector will not undertake any of the following works unless specifically agreed in writing at the time of order:

Checking the depth and underlying structural integrity of any surface areas and/or carrying out any testing of the impact attenuating properties of any surfaces; the identification of any corrosion, rot or other deterioration in any apparatus or equipment other than by an external inspection; the inspection of any equipment (or part thereof) that is beneath the playing surface (loose-fill materials may be moved to expose foundations); tightening any bolts, hinges or other fixing devices on any apparatus or equipment; assessing or inspecting any electrical installations contained on any site and/or apparatus and/or equipment; assessing or inspecting any water supplies and/or water features and/or any associated computerised systems (including carrying out any programming); where planting or trees are mentioned in the report no assessments of toxicity, suitability or condition are undertaken – the owner/operator should have suitable inspections provided by a competent person.

The owner/operator should have a ‘design risk assessment’ provided by the manufacturer/designer of the area for the equipment and location in which the facility is installed.

The operator is responsible for managing risks of their provision and is required by law to carry out a ‘suitable and sufficient assessment’ of the risks associated with a site or activity. This inspection shall be considered as contributing to the operator’s discharge of this responsibility.

The details contained within the report are a snapshot of the condition at the time of inspection only and subsequent events may affect the condition of the facility. Suggested remedial actions are based on the knowledge and experience of the inspector and/or that of the inspection company. The owner/operator should always seek the advice of the manufacturer or a competent person when undertaking repairs and/or modifications to equipment.

Responsibility of the Owner/Operator The owner/operator has overall responsibility for the safety, management, and ongoing maintenance of the play equipment and surrounding area. This includes ensuring that equipment is appropriately installed, inspected, maintained, repaired, and managed in accordance with the relevant standards, manufacturer guidance, and applicable legislation

Inspections undertaken by RPII Annual Inspectors contribute to the owner/operator’s discharge of these responsibilities but do not replace the requirement for the owner/operator to carry out suitable and sufficient risk assessments, routine monitoring, and maintenance, or to act on identified defects and recommendations. Responsibility for initiating or undertaking any actions arising from this report rests solely with the Client.

The operator is responsible for following the guidance of the relevant standards. The standards give guidance on the installation, inspection, maintenance and operation of the various types of facilities. The inspection guidance is listed in Table 1, with an indication of which parts will be included in an RPII Annual or Post-Installation Inspection. The relevant standards also contain additional parts which the operator should follow.

Inspection recommendations of relevant standards Inclusion or exclusion within this table does not imply an exhaustive assessment; all inspections and checks are subject to the limitations described within this methodology. Refer to relevant standards for full text	Annual Main	RPII Annual/ Post Installation Inspection
6.1 d) Overall levels of safety of equipment (see note 1)	✓	✓ [1]
6.1 d) Overall levels of safety of foundations (see note 1)	✓	✓ [1]
6.1 d) Overall levels of safety of playing surfaces (see note 2)	✓	✓ [2]
6.1 d) Compliance with the relevant parts of the standard and or risk assessment (see note 3)	✓	✓ [3]
6.1 d) Effects of weather	✓	✓
6.1 d) Presence of rot, decay or corrosion (see note 1)	✓	✓ [1]
6.1 d) Assessment of repairs made or added or replaced components (see note 4)	✓	✓ [4]
6.1 d) Excavation or dismantling/additional measures	✓	✗
6.2.1 Assessment of glass reinforced plastics (see note 5)	✓	✓ [5]
6.2.1 Inspection of one post equipment (see note 1)	✓	✓ [1]
6.2.4 Undertaking the Operators inspection protocol	✓	✗

NB: The clause numbers in table 1 are taken from BS EN 1176 - Part 7:2020. The content is equally applicable to all other relevant standards listed herein. Playgrounds contain a range of equipment from different manufacturers and installed over a number of years; operators should implement any guidance provided by the manufacturer. Item specific detail is not readily available to RPII Playground Inspectors, whose report contributes to the operator's overall inspection responsibilities as detailed in the relevant standards. RPII Annual Inspectors may, where readily available, refer to manufacturer installation instructions for general context, but do not check against these in full on any item as inspections are focused on compliance with relevant standards and maintenance defects; the responsibility for ensuring that installation instructions are adhered to lies with the owner and the installer.

[1] A manual test only is undertaken for stability. Wear and instability are only detectable where readily apparent without dismantling or destruction and without the use of tools, excavation or specialist equipment. Rot and corrosion are tested or with a hammer and/or steel rod. Decay in timber may exist which can only be found with specialist equipment.

[2] Only the visible condition and dimensional compliance of surface extent is considered. Neither testing of impact attenuating properties nor measurement of the thickness of bound surfaces are undertaken on RPII annual inspections.

[3] The inspection assesses compliance where this can be tested on site using manual methods without dismantling, destruction and without the use of tools or specialist equipment.

[4] The operator should use manufacturer's recommended parts, or equivalent. We are unable to verify if such parts have been used, and any subsequent change in quality or performance.

[5] Visible glass fibres will be noted in reports. The operator is responsible for repairs or replacement.

Risk Assessment Matrix

			Scores in the report are multiplication factors of Likelihood x Severity					
			Severity>>					
Likelihood	Very High probability, if the situation is not addressed an accident is almost certain.	5	Very High	VL (5)	L (10)	M (15)	H (20)	VH (25)
	High probability an accident is probable without any added factor.	4	High	VL (4)	L (8)	M (12)	H (16)	H (20)
	Moderate probability an incident is foreseeable.	3	Moderate	VL (3)	L (6)	L (9)	M (12)	M (15)
	Some probability, requires a combination of factors to take place.	2	Low	VL (2)	VL (4)	L (6)	L (8)	L (10)
	No significant probability; lightning strike, freak accident.	1	Very Low	VL (1)	VL (2)	VL (3)	VL (4)	VL (5)
			Very Low	Low	Moderate	High	Very High	
			1	2	3	4	5	
			No injury likely e.g. damaged or soiled clothing, minor bruising, grazes	Minor injury, laceration or bruising requiring first aid only	Injury requiring medical intervention e.g. cuts requiring stitches	Serious injury including concussions or fracture of long bones	Severe injury involving a potential life changing injury or fatality	
			Severity>>					
<p>Note 1: The total risk scores included within our reports are a multiplication factor of the calculated Likelihood and Severity of each finding. Both Likelihood and Severity are given a number between 1 - 5 as shown on the matrix above and these two numbers are then multiplied together to give the total risk score that is shown against defects on the report. Total risk scores can be divided in both directions, i.e. a total risk score of 12 could be a Likelihood (3) x Severity (4) or Likelihood (4) x Severity (3).</p> <p>Note 2: When we inspect we only see a snapshot of the current condition of the equipment. It is the operators responsibility to ensure that there is a continuing level of maintenance to keep the equipment in good working order and the site fit for use.</p>								

Equipment has been assessed to the following standards where relevant:

- BS EN 1176 Parts 1-11 (Playground equipment and surfacing)
- BS EN 14974 (Facilities for users of roller sports equipment)
- BS EN 15312 (Free access multi-sports equipment)
- BS EN 16899 (Parkour Equipment)
- BS EN 16630 (Outdoor Fitness Equipment).

Thurston Playing Field

Inspection Ref: 3004548

Site Ref: 16629

Inspected: 9-March-2026 - 11:30 by Liam Last (RPII Annual Inspector)

Risk Assessment: 10 Low Risk

**Location:**

The site is located in an area of public open space and is not directly overlooked by any properties in the local community.

Disabled Access:

Some accessible features - The area includes limited accessible elements; however, aspects of the layout, surfacing, or equipment may present barriers to use for some people with disabilities without reasonable adjustments or assistance.

i 8 - Low Risk

Item: Site General
Manufacturer: Owner/Operator
Surface Type: N/A
Item Quantity: 1
Equipment Compliance: N/A
Surface Area Compliance: N/A

Total Findings: 1



Finding 1

There are a number of molehills within the area and these may present unforeseen hazards for users - Remove moles by appropriate means, reinstate surfaces to level and maintain the area

i 4 - Very Low Risk

Item: Sign
Manufacturer: Not Identified
Surface Type: N/A
Item Quantity: 2
Equipment Compliance: N/A
Surface Area Compliance: N/A

Total Findings: 1



Finding 1

This item is satisfactory - no work required -

i 8 - Low Risk

Item: Gate
Manufacturer: Not Identified
Surface Type: Grass
Item Quantity: 1
Equipment Compliance: N/A
Surface Area Compliance: N/A



Total Findings: 2

Finding 1

The surface has eroded in some areas and may be slippery in wet conditions - Reinstate the surface

Finding 2

There are openings that are less than 12mm that could trap or crush fingers - Provide a 12mm gap throughout full range of motion at both sides of gate

i 8 - Low Risk

Item: Gate - Maintenance
Manufacturer: Not Identified
Surface Type: Grass
Item Quantity: 1
Equipment Compliance: N/A
Surface Area Compliance: N/A



Total Findings: 3

Finding 1

The maintenance gate was correctly padlocked at the time of inspection, however this means that the inspector was unable to fully assess the gate - Ensure that there are 12mm gaps throughout the full range of motion on gate/s and between leaves where relevant

Finding 2

There are projecting bolt thread(s) present - Remove excess thread length and deburr or provide cap

Finding 3

The mesh is damaged - Replace

i 8 - Low Risk

Item: Fence
Manufacturer: Not Identified
Surface Type: Grass
Item Quantity: 1
Equipment Compliance: N/A
Surface Area Compliance: N/A

Total Findings: 1



Finding 1

The fence is severely damaged in places - Repair or replace all affected sections

i 4 - Very Low Risk

Item: Hedge
Manufacturer: Natural Feature
Surface Type: Grass
Item Quantity: 1
Equipment Compliance: N/A
Surface Area Compliance: N/A

Total Findings: 1



Finding 1

This item is satisfactory - no work required -

i 6 - Low Risk

Item: Bench
Manufacturer: Not Identified
Surface Type: Concrete
Item Quantity: 1
Equipment Compliance: N/A
Surface Area Compliance: N/A



Total Findings: 1

Finding 1

The surface has eroded in some areas and may be slippery in wet conditions - Reinstate the surface

i 4 - Very Low Risk

Item: Litter Bin
Manufacturer: Not Identified
Surface Type: Grass
Item Quantity: 1
Equipment Compliance: N/A
Surface Area Compliance: N/A



Total Findings: 1

Finding 1

This item is satisfactory - no work required -

i 9 - Low Risk

Item: 2 Bay (2 Flat, 2 Cradle)
Manufacturer: Not Identified
Surface Type: Wet Pour
Item Quantity: 1
Equipment Compliance: Yes
Surface Area Compliance: No
Life Expectancy: 5 -10 Years
Total Findings: 11



Finding 1

The seat(s) and suspension were missing at the time of inspection and the inspector was unable to make a full compliance assessment - Replace missing seat(s) and suspension(s) (subject to any other findings needing correction)

Finding 2

There are trip hazards at the edges of the surface - Remove trip hazard

Finding 3

There is algae, silt or moss growth on the surface resulting in slippery conditions - Clean and treat appropriately

Finding 4

There are gaps opening between the surfacing and the edging surround or between the joints in the surfacing - Monitor for any further deterioration and repair as required

Finding 5

There are significant gaps (over 30mm) between the surface and the edging or between the joints in the surface; these are large enough for a small foot to enter - Repair surfacing

Finding 6

The surfacing width under the seat/s is / are less than 875mm when measured from the centre of the seat outwards, and fail the requirements of BS EN 1176 Part 2 - Monitor - No action given the risk assessment

Finding 7

The kerb forms a hard object within the impact area of the equipment in contravention of the requirements of BS EN 1176 Part 1 - Monitor - No action given the risk assessment

Finding 8

The seat has minor damage or wear - Monitor for any further deterioration and replace as required

Finding 9

There is some notable evidence of chain wear - Monitor for any further deterioration and replace when 40% worn

Finding 10

Crucifix or T connectors should have at least two complete chain links through the connector to meet with the manufacturers recommendations - Rectify installation to ensure at least two complete links are through the connectors

Finding 11

A number of fixing(s) have worked loose - Secure all loose fixings

i 6 - Low Risk

Item: See Saw
Manufacturer: Wicksteed Playgrounds
Surface Type: Grass
Item Quantity: 1
Equipment Compliance: No
Surface Area Compliance: Yes
Life Expectancy: 5 -10 Years
Total Findings: 2



Finding 1

The surface has eroded in some areas and may be slippery in wet conditions - Reinstate the surface

Finding 2

The item fails to meet the requirements of BS EN 1176 Part 1 4.2.7.2 for head and neck entrapment in the frame - Monitor - No action given the risk assessment

i 9 - Low Risk

Item: Multi Play (Junior)
Manufacturer: Not Identified
Surface Type: Bark Mulch
Item Quantity: 1
Equipment Compliance: No
Surface Area Compliance: No
Life Expectancy: 5 -10 Years
Total Findings: 12



Finding 1

The depth of the loose fill surfacing is lower than the recommended depth specified in BS EN 1176 for a fall height over 2.0m. A minimum depth of 400mm is recommended (including an extra 100mm to allow for compaction and displacement as per BS EN 1176 Part 1 - Table 4) - Top up loosefill to recommended levels

Finding 2

The timber edge forms a hard object within the falling space of the equipment and there is also insufficient surfacing provided in contravention of BS EN 1176 Part 1 - Monitor - No action given the risk assessment

Finding 3

There is/are finger entrapment/s in the post due to missing inserts and the item fails to meet the requirements of BS EN 1176 Part 1 4.2.7.6 Entrapment of fingers - Provide inserts to remove entrapment

Finding 4

There is/are finger entrapment/s in the climbing wall and the item fails to meet the requirements of BS EN 1176 Part 1 4.2.7.6 Entrapment of fingers - Monitor - No remedial work recommended

Finding 5

There is a large amount of movement within the structure - Ensure all fixings are secured and monitor for any further deterioration and replace as required

Finding 6

A number of fixing(s) have worked loose - Secure all loose fixings

Finding 7

The item is slightly loose in its foundations - Monitor for any further deterioration and repair as required

Finding 8

There is algae or moss on the surface of the equipment - Clean and treat appropriately

Finding 9

The top of the barrier may encourage standing or sitting, in contravention of the requirements of BS EN 1176 Part 1 - Monitor - No action given the risk assessment

Finding 10

There are projecting bolt thread(s) present - Remove excess thread length and deburr or provide cap

Finding 11

The paintwork on this item has been damaged or worn exposing the metal underneath which is rusting / corroding - Treat affected areas and repaint

Finding 12

The ropes/nets are worn/damaged in places - Monitor for any further deterioration and repair or replace as required

i 10 - Low Risk

Item: Basketball Goal
Manufacturer: Playquest
Surface Type: Grass
Item Quantity: 1
Equipment Compliance: Yes
Surface Area Compliance: N/A
Life Expectancy: 5 -10 Years
Total Findings: 4



Finding 1
 There is algae, silt or moss growth on the surface resulting in slippery conditions - Clean and treat appropriately

Finding 2
 A number of fixing(s) have worked loose - Secure all loose fixings

Finding 3
 The item has been damaged - Repair or replace the item / affected part

Finding 4
 Parts of the steel on this item have corroded excessively - Ensure all affected areas are treated and repaired

Findings information

i 8 - Low Risk (Finding 1)

Item: Ancillary Items - Site General
Manufacturer: Owner/Operator

Risk Level: L - Low Risk
Surface: N/A



Finding: There are a number of molehills within the area and these may present unforeseen hazards for users

Action: Remove moles by appropriate means, reinstate surfaces to level and maintain the area

i 6 - Low Risk (Finding 1)

Item: Gates - Gate
Manufacturer: Not Identified

Risk Level: L - Low Risk
Surface: Grass



Finding: The surface has eroded in some areas and may be slippery in wet conditions
Action: Reinstate the surface

i 8 - Low Risk (Finding 2)

Item: Gates - Gate
Manufacturer: Not Identified

Risk Level: L - Low Risk
Surface: Grass



Finding: There are openings that are less than 12mm that could trap or crush fingers
Action: Provide a 12mm gap throughout full range of motion at both sides of gate

i 0 - Risk Assessment not Undertaken (Finding 1)

Item: Gates - Gate - Maintenance
Manufacturer: Not Identified

Risk Level: N - Risk Assessment not Undertaken
Surface: Grass



Finding: The maintenance gate was correctly padlocked at the time of inspection, however this means that the inspector was unable to fully assess the gate

Action: Ensure that there are 12mm gaps throughout the full range of motion on gate/s and between leaves where relevant

i 8 - Low Risk (Finding 2)

Item: Gates - Gate - Maintenance
Manufacturer: Not Identified

Risk Level: L - Low Risk
Surface: Grass



Finding: There are projecting bolt thread(s) present

Action: Remove excess thread length and deburr or provide cap

i 8 - Low Risk (Finding 3)

Item: Gates - Gate - Maintenance
Manufacturer: Not Identified

Risk Level: L - Low Risk
Surface: Grass



Finding: The mesh is damaged

Action: Replace

i 8 - Low Risk (Finding 1)

Item: Fences - Fence
Manufacturer: Not Identified

Risk Level: L - Low Risk
Surface: Grass



Finding: The fence is severely damaged in places

Action: Repair or replace all affected sections

i 6 - Low Risk (Finding 1)

Item: Ancillary Items - Bench
Manufacturer: Not Identified

Risk Level: L - Low Risk
Surface: Concrete



Finding: The surface has eroded in some areas and may be slippery in wet conditions
Action: Reinstate the surface

i 0 - Risk Assessment not Undertaken (Finding 1)

Item: Swings - 2 Bay (2 Flat, 2 Cradle)
Manufacturer: Not Identified

Risk Level: N - Risk Assessment not Undertaken
Surface: Wet Pour



Finding: The seat(s) and suspension were missing at the time of inspection and the inspector was unable to make a full compliance assessment

Action: Replace missing seat(s) and suspension(s) (subject to any other findings needing correction)

i 8 - Low Risk (Finding 2)

Item: Swings - 2 Bay (2 Flat, 2 Cradle)
Manufacturer: Not Identified

Risk Level: L - Low Risk
Surface: Wet Pour



Finding: There are trip hazards at the edges of the surface **Action:** Remove trip hazard

i 8 - Low Risk (Finding 3)

Item: Swings - 2 Bay (2 Flat, 2 Cradle)
Manufacturer: Not Identified

Risk Level: L - Low Risk
Surface: Wet Pour



Finding: There is algae, silt or moss growth on the surface resulting in slippery conditions **Action:** Clean and treat appropriately

i 6 - Low Risk (Finding 4)

Item: Swings - 2 Bay (2 Flat, 2 Cradle)
Manufacturer: Not Identified

Risk Level: L - Low Risk
Surface: Wet Pour



Finding: There are gaps opening between the surfacing and the edging surround or between the joints in the surfacing
Action: Monitor for any further deterioration and repair as required

i 9 - Low Risk (Finding 5)

Item: Swings - 2 Bay (2 Flat, 2 Cradle)
Manufacturer: Not Identified

Risk Level: L - Low Risk
Surface: Wet Pour



Finding: There are significant gaps (over 30mm) between the surface and the edging or between the joints in the surface; these are large enough for a small foot to enter
Action: Repair surfacing

i 5 - Very Low Risk (Finding 6)

Item: Swings - 2 Bay (2 Flat, 2 Cradle)
Manufacturer: Not Identified

Risk Level: V - Very Low Risk
Surface: Wet Pour



Finding: The surfacing width under the seat/s is / are less than 875mm when measured from the centre of the seat outwards, and fail the requirements of BS EN 1176 Part 2

Action: Monitor - No action given the risk assessment

i 5 - Very Low Risk (Finding 7)

Item: Swings - 2 Bay (2 Flat, 2 Cradle)
Manufacturer: Not Identified

Risk Level: V - Very Low Risk
Surface: Wet Pour



Finding: The kerb forms a hard object within the impact area of the equipment in contravention of the requirements of BS EN 1176 Part 1

Action: Monitor - No action given the risk assessment

i 6 - Low Risk (Finding 8)

Item: Swings - 2 Bay (2 Flat, 2 Cradle)
Manufacturer: Not Identified

Risk Level: L - Low Risk
Surface: Wet Pour



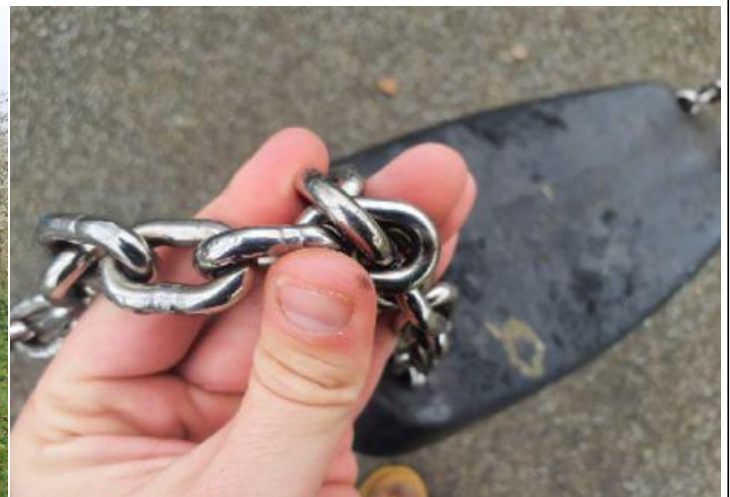
Finding: The seat has minor damage or wear

Action: Monitor for any further deterioration and replace as required

i 6 - Low Risk (Finding 9)

Item: Swings - 2 Bay (2 Flat, 2 Cradle)
Manufacturer: Not Identified

Risk Level: L - Low Risk
Surface: Wet Pour



Finding: There is some notable evidence of chain wear

Action: Monitor for any further deterioration and replace when 40% worn

i 8 - Low Risk (Finding 10)

Item: Swings - 2 Bay (2 Flat, 2 Cradle)
Manufacturer: Not Identified

Risk Level: L - Low Risk
Surface: Wet Pour



Finding: Crucifix or T connectors should have at least two complete chain links through the connector to meet with the manufacturers recommendations

Action: Rectify installation to ensure at least two complete links are through the connectors

i 8 - Low Risk (Finding 11)

Item: Swings - 2 Bay (2 Flat, 2 Cradle)
Manufacturer: Not Identified

Risk Level: L - Low Risk
Surface: Wet Pour



Finding: A number of fixing(s) have worked loose

Action: Secure all loose fixings

i 6 - Low Risk (Finding 1)

Item: Rocking Equipment - See Saw
Manufacturer: Wicksteed Playgrounds

Risk Level: L - Low Risk
Surface: Grass



Finding: The surface has eroded in some areas and may be slippery in wet conditions
Action: Reinstate the surface

i 5 - Very Low Risk (Finding 2)

Item: Rocking Equipment - See Saw
Manufacturer: Wicksteed Playgrounds

Risk Level: V - Very Low Risk
Surface: Grass



Finding: The item fails to meet the requirements of BS EN 1176 Part 1 4.2.7.2 for head and neck entrapment in the frame
Action: Monitor - No action given the risk assessment

i 8 - Low Risk (Finding 1)

Item: Activity Equipment - Multi Play (Junior)
Manufacturer: Not Identified

Risk Level: L - Low Risk
Surface: Bark Mulch



Finding: The depth of the loose fill surfacing is lower than the recommended depth specified in BS EN 1176 for a fall height over 2.0m. A minimum depth of 400mm is recommended (including an extra 100mm to allow for compaction and displacement as per BS EN 1176 Part 1 - Table 4)

Action: Top up loosefill to recommended levels

i 8 - Low Risk (Finding 2)

Item: Activity Equipment - Multi Play (Junior)
Manufacturer: Not Identified

Risk Level: L - Low Risk
Surface: Bark Mulch



Finding: The timber edge forms a hard object within the falling space of the equipment and there is also insufficient surfacing provided in contravention of BS EN 1176 Part 1

Action: Monitor - No action given the risk assessment

i 4 - Very Low Risk (Finding 3)

Item: Activity Equipment - Multi Play (Junior)
Manufacturer: Not Identified

Risk Level: V - Very Low Risk
Surface: Bark Mulch



Finding: There is/are finger entrapment/s in the post due to missing inserts and the item fails to meet the requirements of BS EN 1176 Part 1 4.2.7.6 Entrapment of fingers

Action: Provide inserts to remove entrapment

i 5 - Very Low Risk (Finding 4)

Item: Activity Equipment - Multi Play (Junior)
Manufacturer: Not Identified

Risk Level: V - Very Low Risk
Surface: Bark Mulch



Finding: There is/are finger entrapment/s in the climbing wall and the item fails to meet the requirements of BS EN 1176 Part 1 4.2.7.6 Entrapment of fingers

Action: Monitor - No remedial work recommended

i 8 - Low Risk (Finding 5)

Item: Activity Equipment - Multi Play (Junior)
Manufacturer: Not Identified

Risk Level: L - Low Risk
Surface: Bark Mulch



Finding: There is a large amount of movement within the structure

Action: Ensure all fixings are secured and monitor for any further deterioration and replace as required

i 8 - Low Risk (Finding 6)

Item: Activity Equipment - Multi Play (Junior)
Manufacturer: Not Identified

Risk Level: L - Low Risk
Surface: Bark Mulch



Finding: A number of fixing(s) have worked loose

Action: Secure all loose fixings

i 6 - Low Risk (Finding 7)

Item: Activity Equipment - Multi Play (Junior)
Manufacturer: Not Identified

Risk Level: L - Low Risk
Surface: Bark Mulch



Finding: The item is slightly loose in its foundations

Action: Monitor for any further deterioration and repair as required

i 8 - Low Risk (Finding 8)

Item: Activity Equipment - Multi Play (Junior)
Manufacturer: Not Identified

Risk Level: L - Low Risk
Surface: Bark Mulch



Finding: There is algae or moss on the surface of the equipment

Action: Clean and treat appropriately

i 6 - Low Risk (Finding 9)

Item: Activity Equipment - Multi Play (Junior)
Manufacturer: Not Identified

Risk Level: L - Low Risk
Surface: Bark Mulch



Finding: The top of the barrier may encourage standing or sitting, in contravention of the requirements of BS EN 1176 Part 1

Action: Monitor - No action given the risk assessment

i 9 - Low Risk (Finding 10)

Item: Activity Equipment - Multi Play (Junior)
Manufacturer: Not Identified

Risk Level: L - Low Risk
Surface: Bark Mulch



Finding: There are projecting bolt thread(s) present

Action: Remove excess thread length and deburr or provide cap

i 6 - Low Risk (Finding 11)

Item: Activity Equipment - Multi Play (Junior)
Manufacturer: Not Identified

Risk Level: L - Low Risk
Surface: Bark Mulch



Finding: The paintwork on this item has been damaged or worn exposing the metal underneath which is rusting / corroding

Action: Treat affected areas and repaint

i 6 - Low Risk (Finding 12)

Item: Activity Equipment - Multi Play (Junior)
Manufacturer: Not Identified

Risk Level: L - Low Risk
Surface: Bark Mulch



Finding: The ropes/nets are worn/damaged in places

Action: Monitor for any further deterioration and repair or replace as required

i 8 - Low Risk (Finding 1)

Item: Multi Use Games Area - Basketball Goal
Manufacturer: Playquest

Risk Level: L - Low Risk
Surface: Grass



Finding: There is algae, silt or moss growth on the surface resulting in slippery conditions

Action: Clean and treat appropriately

i 10 - Low Risk (Finding 2)

Item: Multi Use Games Area - Basketball Goal
Manufacturer: Playquest

Risk Level: L - Low Risk
Surface: Grass



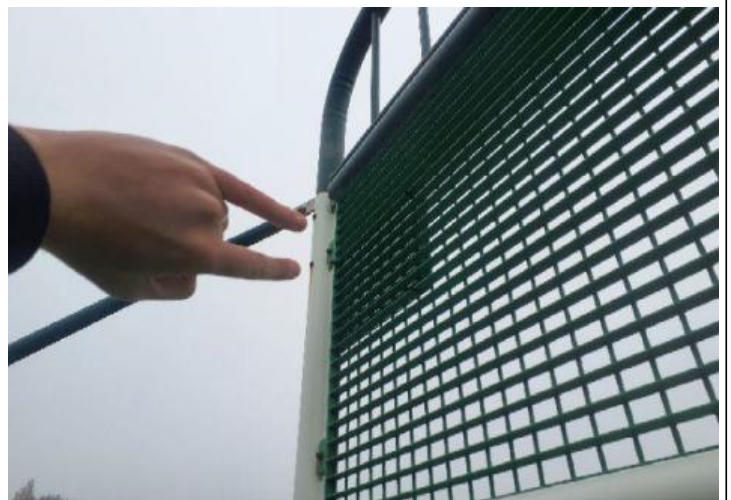
Finding: A number of fixing(s) have worked loose

Action: Secure all loose fixings

i 8 - Low Risk (Finding 3)

Item: Multi Use Games Area - Basketball Goal
Manufacturer: Playquest

Risk Level: L - Low Risk
Surface: Grass



Finding: The item has been damaged

Action: Repair or replace the item / affected part

i 9 - Low Risk (Finding 4)

Item: Multi Use Games Area - Basketball Goal
Manufacturer: Playquest

Risk Level: L - Low Risk
Surface: Grass



Finding: Parts of the steel on this item have corroded excessively

Action: Ensure all affected areas are treated and repaired