

Emergency Planning Committee Meeting – Wednesday 15th October 2025

Item 6a – To note the changes to predicted flood area boundaries following the updating of national flood maps in June 2025.

Background. The Environment Agency has recently published new national risk information for flooding and coastal erosion. This includes future scenarios accounting for climate change.

New national flood risk assessment (NaFRA)

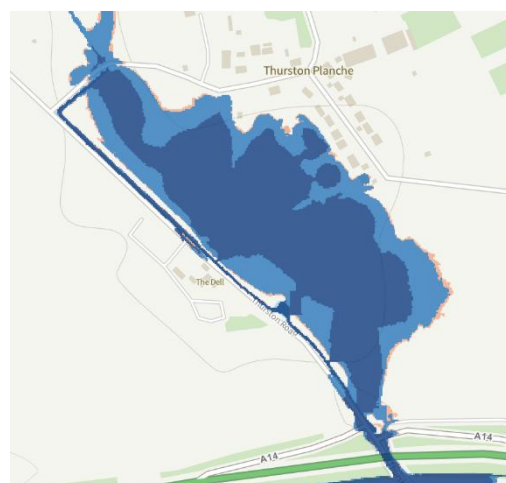
- provides a single picture of current and future flood risk from rivers and the sea, and from surface water
- uses both existing detailed local information and improved national data
- includes the potential impact of climate change on flood risk, based on [UK Climate Projections \(UKCP18\)](#)
- shows potential flood depths
- provides much higher resolution maps that make it easier to see where there is risk

Access the maps here to view the current flood zones 2 and 3 shown in dark and light blue versus the future projections for climate change 2070 – 2125 shown in orange

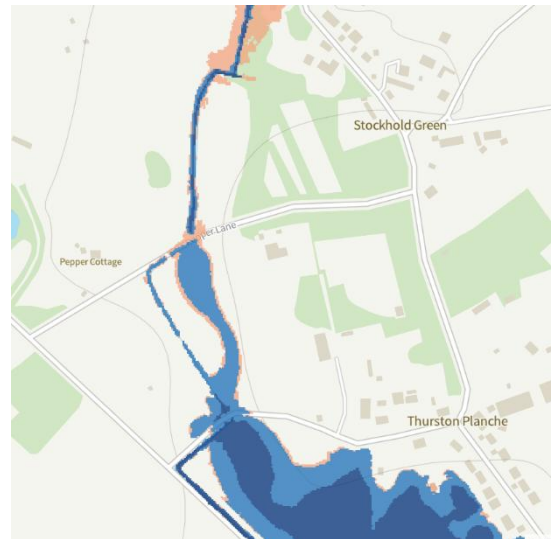
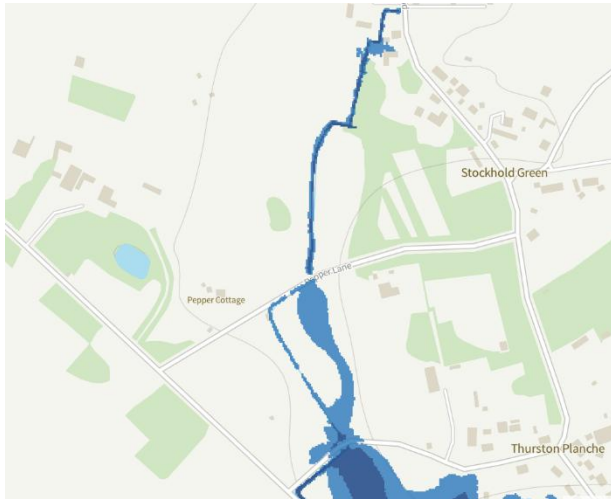
[Map – Flood map for planning – GOV.UK](#)

Concerns for Thurston include the following risk areas.

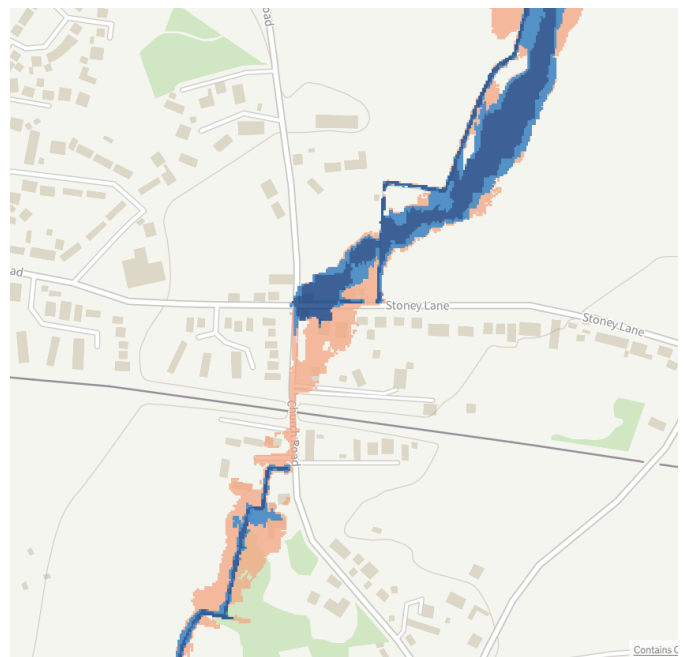
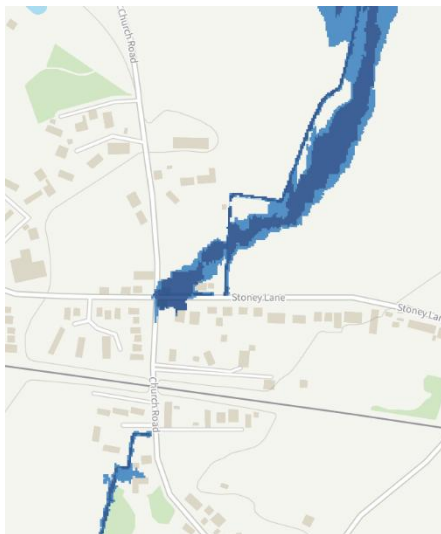
Beyton to Thurston Planche – not much change only minimal orange shading



Pepper Lane, Care Farm and Thurston House meadow – concerns for Glebe Cottage, Lime tree barn and 2, 9 and 10 Woodland Close



Church Road and Stoney Lane – Extensive additional areas predicted – concerns for existing flood risk at The Laurels and Forge Cottage – future concerns for Church View, Appletree Cottage and 1 and 2 The Drift



Nature Reserve – slight variation on the area predicted to flood but no future data available (data assumed to be similar to south of Norton Road) – consideration will be needed in planning for this newly acquired area especially on where walkways go and wetland planting.

